



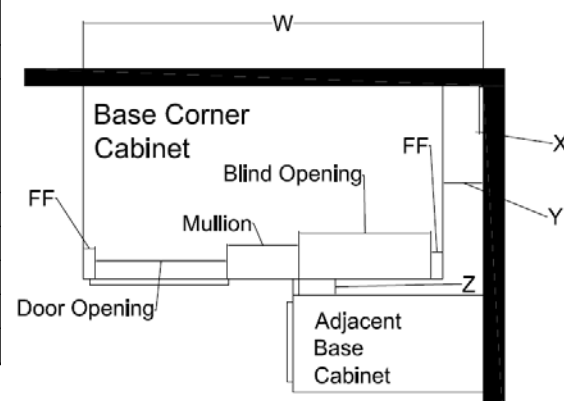
Corner Cabinet “How To Guide”

Base Corner *Partial Overlay* Cabinets

Reference page 172 in the September 2014 Price and Specification Guide Book for additional information.

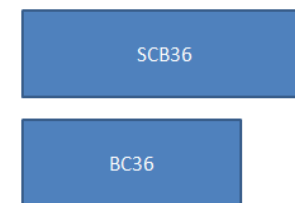
Square Corner Base Cabinet Information (Previous)

7/16" Overlay Styles	Actual Cabinet Width	X		Y	Z		W	
		Min Pull	Min. Pull w/ Hardware	Max Pull	Min. Filler Required	Min. Filler Required w/ Hardware	Min. Pull From Wall To End of Cabinet	Max Pull From Wall To End of Cabinet
SCB36	36"	1/4"	1 3/4"	12 1/2"	1/2"	2"	36 1/4"	48 1/2"
SCB39	39"	1 3/4"	3 1/4"	8"	1/2"	2"	40 3/4"	47"
SCB42	42"	0"	1/4"	8"	1/2"	2"	42"	50"
SCB45	45"	0"	1/4"	5"	1/2"	2"	45"	50"
SCB48	48"	0"	0"	3 1/2"	1/2"	2"	48"	51 1/2"



Base Corner Cabinet Information (NEW)

7/16" Overlay Styles	Actual Cabinet Width	X		Y	Z		W	
		Min Pull	Min. Pull w/ Hardware	Max Pull	Min. Filler Required	Min. Filler Required w/ Hardware	Min. Pull From Wall To End of Cabinet	Max Pull From Wall To End of Cabinet
BC36	27"	9 1/4"	10 3/4"	12 1/2"	1/2"	2"	36 1/4"	39 1/2"
BC39	30"	6 1/4"	7 3/4"	12 1/2"	1/2"	2"	36 1/4"	42 1/2"
BC42	36"	3 1/4"	4 3/4"	9 1/2"	1/2"	2"	39 1/4"	45 1/2"
BC45	42"	1/4"	1 3/4"	6 1/2"	1/2"	2"	42 1/4"	48 1/2"
BC48	45"	0"	1/4"	5"	1/2"	2"	45"	50"
BC51	48"	0"	0"	3 1/2"	1/2"	2"	48"	51 1/2"



The image above represents a top down visual example of an SCB36 to BC36 size change in a corner application. Please note the actual cabinet width size changes in all **new** base corner cabinets. Refer to column "W" for the min/max wall space usage.

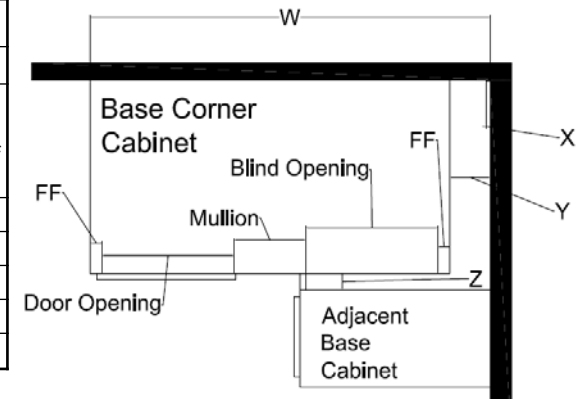
Items highlighted in yellow represent the new Base Corner dimension changes.

Base Corner Full Overlay Cabinets

Reference page 172 in the September 2014 Price and Specification Guide Book for additional information.

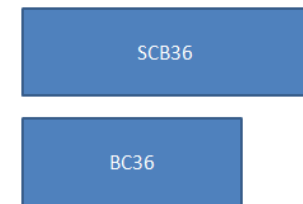
Square Corner Base Cabinet Information (Previous)

Full Overlay Styles	Actual Cabinet Width	X		Y	Z		W	
		Min Pull	Min. Pull w/ Hardware	Max Pull	Min. Filler Required	Min. Filler Required w/ Hardware	Min. Pull From Wall To End of Cabinet	Max Pull From Wall To End of Cabinet
SCB36	36"	3/4"	2 1/4"	12 1/2"	1"	2 1/2"	36 3/4"	48 1/2"
SCB39	39"	2 1/4"	3 3/4"	8"	1"	2 1/2"	41 1/4"	47"
SCB42	42"	0"	3/4"	8"	1"	2 1/2"	42"	50"
SCB45	45"	0"	3/4"	5"	1"	2 1/2"	45"	50"
SCB48	48"	0"	0"	3 1/2"	1"	2 1/2"	48"	51 1/2"



Base Corner Cabinet Information (NEW)

Full Overlay Styles	Actual Cabinet Width	X		Y	Z		W	
		Min Pull	Min. Pull w/ Hardware	Max Pull	Min. Filler Required	Min. Filler Required w/ Hardware	Min. Pull From Wall To End of Cabinet	Max Pull From Wall To End of Cabinet
BC36	27"	9 3/4"	11 1/4"	12 1/2"	1"	2 1/2"	36 3/4"	39 1/2"
BC39	30"	6 3/4"	8 1/4"	12 1/2"	1"	2 1/2"	36 3/4"	42 1/2"
BC42	36"	3 3/4"	5 1/4"	9 1/2"	1"	2 1/2"	39 3/4"	45 1/2"
BC45	42"	3/4"	2 1/4"	6 1/2"	1"	2 1/2"	42 3/4"	48 1/2"
BC48	45"	0"	3/4"	5"	1"	2 1/2"	45"	50"
BC51	48"	0"	0"	3 1/2"	1"	2 1/2"	48"	51 1/2"



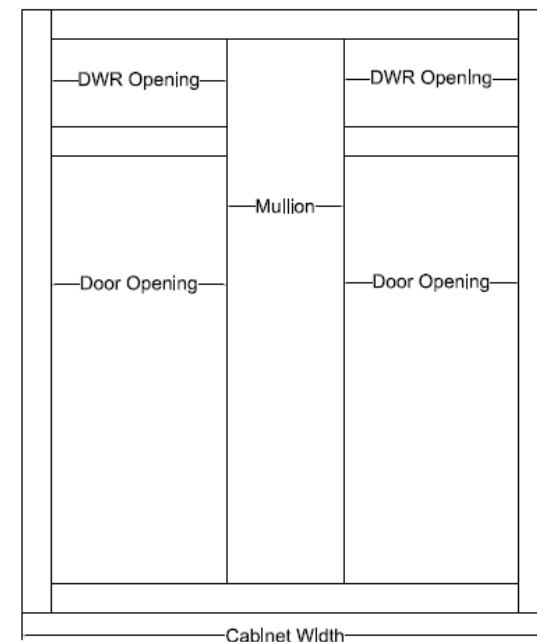
The image above represents a top down visual example of an SCB36 to BC36 size change in a corner application. Please note the actual cabinet width size changes in all **new** base corner cabinets. Refer to column "W" for the min/max wall space usage.

Items highlighted in yellow represent the new Base Corner dimension changes.

Base Corner Door, Drawer Front & Opening Sizes

Base Corner Door, Drawer Front, and Opening Sizes (NEW)

SKU	7/16" Overlay Door	7/16" Overlay Drawer Front	Full Overlay Door	Full Overlay Drawer Front	Door Opening	Drawer Opening
BC36	9 7/8" x 22 7/8"	9 7/8" x 5 1/8"	11 1/2" x 24 1/8"	11 1/2" x 5 3/4"	9" x 22"	9" x 4 1/2"
BC39	9 7/8" x 22 7/8"	9 7/8" x 5 1/8"	11 1/2" x 24 1/8"	11 1/2" x 5 3/4"	9" x 22"	9" x 4 1/2"
BC42	12 7/8" x 22 7/8"	12 7/8" x 5 1/8"	14 1/2" x 24 1/8"	14 1/2" x 5 3/4"	12" x 22"	12" x 4 1/2"
BC45	15 7/8" x 22 7/8"	15 7/8" x 5 1/8"	17 1/2" x 24 1/8"	17 1/2" x 5 3/4"	15" x 22"	15" x 4 1/2"
BC48	17 3/8" x 22 7/8"	17 3/8" x 5 1/8"	19" x 24 1/8"	19" x 5 3/4"	16 1/2" x 22"	16 1/2" x 4 1/2"
BC51	18 7/8" x 22 7/8"	18 7/8" x 5 1/8"	20 1/2" x 24 1/8"	20 1/2" x 5 3/4"	18" x 22"	18" x 4 1/2"



Square Corner *Wall* Cabinets

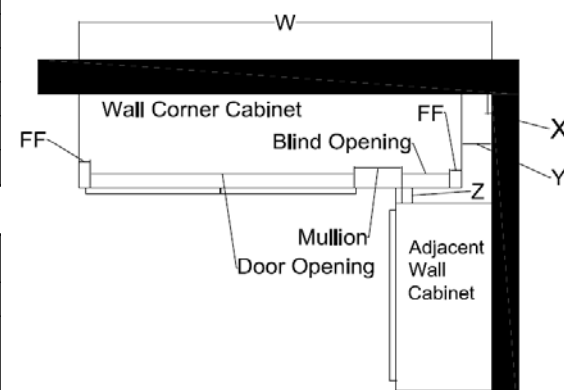
Reference pages 130 - 134 in the September 2014 Price and Specification Guide Book for additional information.

Square Corner Wall Cabinet Information (Current)

7/16" Overlay Styles	Actual Cabinet Width	X		Y	Z		W	
		Min Pull	Min. Pull w/ Hardware	Max Pull	Min. Filler Required	Min. Filler Required w/ Hardware	Min. Pull From Wall To End of Cabinet	Max Pull From Wall To End of Cabinet
SC24xx	24"	1/2"	2"	3 3/4"	1/2"	2"	24 1/2"	27 3/4"
SC30xx	30"	1/2"	2"	3 3/4"	1/2"	2"	30 1/2"	33 3/4"
SC33xx	33"	1/2"	2"	3 3/4"	1/2"	2"	33 1/2"	36 3/4"
SC36xx	36"	1/2"	2"	3 3/4"	1/2"	2"	36 1/2"	39 3/4"
SC42xx	42"	1/2"	2"	3 3/4"	1/2"	2"	42 1/2"	45 3/4"
SC48xx	48"	1/2"	2"	3 3/4"	1/2"	2"	48 1/2"	51 3/4"

Square Corner Wall Cabinet Information (Current)

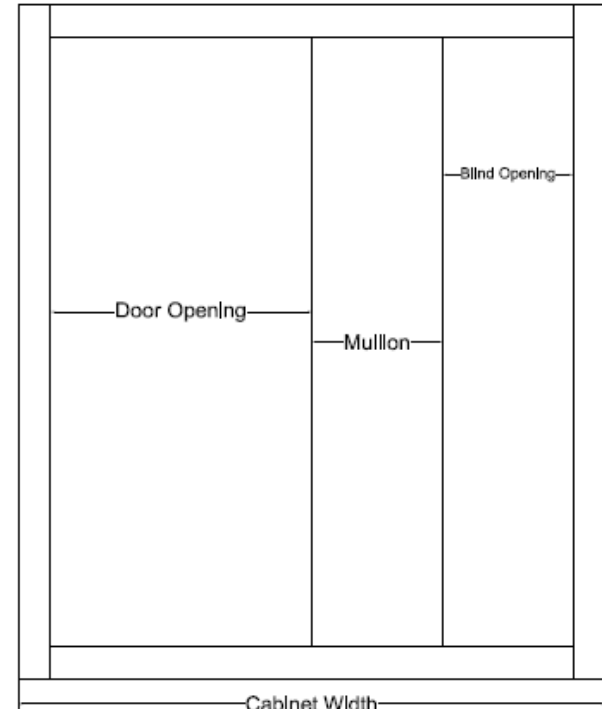
Full Overlay Styles	Actual Cabinet Width	X		Y	Z		W	
		Min Pull	Min. Pull w/ Hardware	Max Pull	Min. Filler Required	Min. Filler Required w/ Hardware	Min. Pull From Wall To End of Cabinet	Max Pull From Wall To End of Cabinet
SC24xx	24"	1"	2 1/2"	3 3/4"	1"	2 1/2"	25"	27 3/4"
SC30xx	30"	1"	2 1/2"	3 3/4"	1"	2 1/2"	31"	33 3/4"
SC33xx	33"	1"	2 1/2"	3 3/4"	1"	2 1/2"	34"	36 3/4"
SC36xx	36"	1"	2 1/2"	3 3/4"	1"	2 1/2"	37"	39 3/4"
SC42xx	42"	1"	2 1/2"	3 3/4"	1"	2 1/2"	43"	45 3/4"
SC48xx	48"	1"	2 1/2"	3 3/4"	1"	2 1/2"	49"	51 3/4"



*** Square Corner Wall dimension sizes did not change in the September 2014 product launch.***

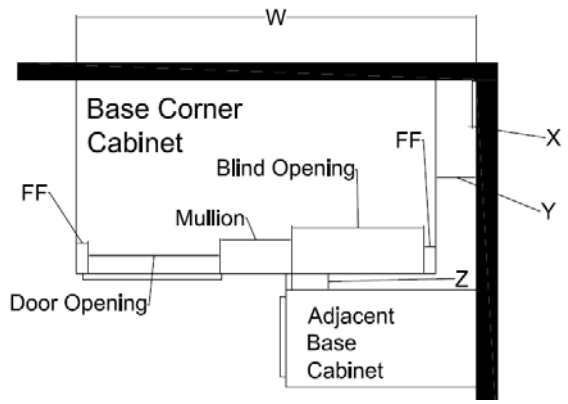
Square Corner *Wall* Door & Opening Sizes

Square Corner Wall Door and Opening Sizes (Current)			
SKU	7/16" Overlay Door	Full Overlay Door	Door Opening
SC2430	9 7/8" x 27 7/8"	11 1/2" x 29 1/2"	9" x 27"
SC3030	15 7/8" x 27 7/8"	17 1/2" x 29 1/2"	15" x 27"
SC3330	18 7/8" x 27 7/8"	20 1/2" x 29 1/2"	18" x 27"
SC3630	21 7/8" x 27 7/8"	23 1/2" x 29 1/2"	21" x 27"
SC4230	12 7/8" x 27 7/8"	14 1/2" x 29 1/2"	12" x 27"
SC4230B	13 7/8" x 27 7/8"	14 11/16" x 29 1/2"	12" x 27"
SC4830	15 7/8" x 27 7/8"	17 1/2" x 29 1/2"	15" x 27"
SC4830B	16 7/8" x 27 7/8"	17 11/16" x 29 1/2"	15" x 27"
SC2436	9 7/8" x 33 7/8"	11 1/2" x 35 1/2"	9" x 33"
SC3036	15 7/8" x 33 7/8"	17 1/2" x 35 1/2"	9" x 33"
SC3336	18 7/8" x 33 7/8"	20 1/2" x 35 1/2"	15" x 33"
SC3636	21 7/8" x 33 7/8"	23 1/2" x 35 1/2"	18" x 33"
SC4236	12 7/8" x 33 7/8"	14 1/2" x 35 1/2"	12" x 33"
SC4236B	13 7/8" x 33 7/8"	14 11/16" x 35 1/2"	12" x 33"
SC4836	15 7/8" x 33 7/8"	17 1/2" x 35 1/2"	15" x 33"
SC4836B	16 7/8" x 33 7/8"	17 11/16" x 35 1/2"	15" x 33"
SC2442	9 7/8" x 39 7/8"	11 1/2" x 41 1/2"	9" x 39"
SC3042	15 7/8" x 39 7/8"	17 1/2" x 41 1/2"	15" x 39"
SC3342	18 7/8" x 39 7/8"	20 1/2" x 41 1/2"	18" x 39"
SC3642	21 7/8" x 39 7/8"	23 1/2" x 41 1/2"	21" x 39"
SC4242	12 7/8" x 39 7/8"	14 1/2" x 41 1/2"	12" x 39"
SC4242B	13 7/8" x 39 7/8"	14 11/16" x 41 1/2"	12" x 39"
SC4842	15 7/8" x 39 7/8"	17 1/2" x 41 1/2"	15" x 39"
SC4842B	16 7/8" x 39 7/8"	17 11/16" x 41 1/2"	15" x 39"



32 1/2" High Universal Design Square Corner **Base** Cabinets

Square Corner Base, 32.5 High Cabinet Information (Current)								
7/16" Overlay Styles	Actual Cabinet Width	X		Y	Z		W	
		Min Pull	Min. Pull w/ Hardware	Max Pull	Min. Filler Required	Min. Filler Required w/ Hardware	Min. Pull From Wall To End of Cabinet	Max Pull From Wall To End of Cabinet
SCB3632.5	36"	1/4"	1 3/4"	12 1/2"	1/2"	2"	36 1/4"	48 1/2"
SCB3932.5	39"	1 3/4"	3 1/4"	8"	1/2"	2"	40 3/4"	47"
SCB4232.5	42"	0"	1/4"	8"	1/2"	2"	42"	50"
SCB4532.5	45"	0"	1/4"	5"	1/2"	2"	45"	50"



*** Aristokraft only offers partial overlay styles in 32 1/2" High Square Corner Base cabinets.***
 *** 32 1/2" High Square Corner Base configuration did not change with the September 2014 product launch.***
 *** These SKU's will change to the BC configuration at 32 1/2" high with the Spring 2015 launch.***

32 1/2" High Universal Design Square Corner **Base** Door & Opening Sizes

Square Corner Base, 32 1/2" High Door, Drawer Front, and Opening Sizes (Current)				
SKU	7/16" Overlay Door	7/16" Overlay Drawer Front	Door Opening	Drawer Opening
SCB3632.5	9 7/8" x 20 3/8"	9 7/8" x 5 1/8"	9" x 19 1/2"	9" x 4 1/2"
SCB3932.5	14 3/8" x 20 3/8"	14 3/8" x 5 1/8"	13 1/2" x 19 1/2"	13 1/2" x 4 1/2"
SCB4232.5	14 3/8" x 20 3/8"	14 3/8" x 5 1/8"	13 1/2" x 19 1/2"	13 1/2" x 4 1/2"
SCB4532.5	17 3/8" x 20 3/8"	17 3/8" x 5 1/8"	16 1/2" x 19 1/2"	16 1/2" x 4 1/2"

